



# “OYEZ OYEZ”

## City Celebrates 10th Anniversary

Town Crier Percy Simmonds

Town Crier Percy Simmonds called on the citizens of Wolverhampton to join in the **10th Anniversary** celebrations of city status, as he rang his bell and called people to a ceremony of cake-cutting and speeches led by **Mayor Bert Turner**. Percy had proclaimed the news that Wolverhampton had been granted City status in 2001 and 10 years later he returned to gather the crowds in Queen Square.

The cake, which was specially made by the **Philly Flyer** in Victoria Street, was cut and handed out by **Kim Gilmour** and her team to an eager crowd in the **Mander Centre**, who had taken part in a guess the weight of the cake competition. The winner was **Gurpreet Sidhu**, owner of **Love Fashion** in the Mander Centre, whose expert calculations brought him to within 15g of the actual weight which was 8.65kg.

**Arnold Wilcox-Wood**, Mander Centre Director, said: *“The Mander Centre is situated at the heart of the city centre and is delighted to have been chosen to host these celebrations.”*

Even though Percy is now a sprightly 88 years young he has lost none of his youthful enthusiasm and makes every occasion he attends a special one. An old Wulfrunian himself, Percy is passionate about the city and would love to be invited to more events, so if you would like to contact him send an email to [towncrier@talktalk.net](mailto:towncrier@talktalk.net).

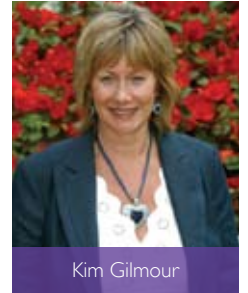
## City Centre Update

We have been out and about this summer engaging with the public, raising the profile of the City Centre and receiving feedback which is always interesting.

Key issues remain the perception of the city centre and how things like empty shops and the feeling of safety impact on what people think and therefore whether they choose to visit Wolverhampton. These issues are raised regularly at our stakeholder groups and our key partners like the Police and City Council.

More events in the city centre is a regular request so read on for details of our **Curry Capital** launch and **10th Anniversary** celebrations. Whilst we look forward to CityStyle and dare I even mention Christmas! **Win Christmas** is a major competition running this year; see page 2 for how you can get involved.

See [www.wolverhamptonccc.co.uk](http://www.wolverhamptonccc.co.uk) for details of our work and what is happening in the city centre.



Kim Gilmour



## Getting Ready for CityStyle

**CityStyle** returns to Wolverhampton's shopping centres for a fabulous day of fashion, health and beauty on **Saturday 24th September**. Following on from last year's success, major retailers from the city will be showcasing their newest autumn ranges on the catwalk, whilst leading hair stylists and beauty brands will offer shoppers free makeovers and advice.

New for this year is the **StyleHub**, situated in the **Mander Centre Lower Floor**, which will host fitness demonstrations, health check awareness sessions in addition to hair and beauty makeovers and holistic therapy sessions. Why not try your hand at jewellery making or enjoy a colour therapy taster session to see what shades will help you look your best for the new autumn and winter seasons fashions.

The **CityStyle Arena** in the **Wulfrun Centre Piazza** will see the catwalk brought to life by the same professional team of models who entertained the crowds last year, so make sure you put the date in your diary. Prize draws, giveaways and free taster sessions are all up for grabs and why not go home with a new hairstyle or make-up from one of the expert teams of stylists.

The event is organised and sponsored by **Wolverhampton City Centre Company** and supported by **The Mander Centre, Wulfrun Centre** and **Eat in Wolverhampton**. **Marianne Carter**, Marketing Officer, said: "This will be an ideal opportunity to pick up some tips and the event aims to bring vitality to the centres and give the shoppers of Wolverhampton the chance to try something new".

For more information visit [www.citystylewolves.co.uk](http://www.citystylewolves.co.uk)

# RECRUITMENT AGENCY BENEFITS BUSINESSES AND PUBLIC

Successful recruitment and training agency **Access2Business** has opened a shop in the **Mander Centre** to further its achievements in supporting unemployed people back into employment, training and self-employment.

The shop, making excellent use of a vacant unit in **St. John's Arcade**, provides an access point for those seeking their services, in addition to their City Centre offices in **The Curve, Tempest Street** where they have been based for the last three years. **Access2Business** supports city businesses with their recruitment and training needs and run advice and guidance sessions; members of the public can speak to advisors for help with CVs, looking for work and advice on training. Visit: [www.access2business.co.uk](http://www.access2business.co.uk) for full information.

## Curry, Poppadoms and Bollywood Babes!

The launch of Wolverhampton's bid to be **Curry Capital of Britain** saw the **Mander Centre** brought to life with the sound of **Asian Drummers** joining forces with **Bollywood Dancers** as the crowds enjoyed free tasters of fantastic Indian Food.

Organisers, the **City Centre Company** team, were delighted with the response to the event which saw hundreds gather to watch. Restaurants the **Bilash, Cafe Rickshaw** and **Red Fort**, who were all part of last year's team which claimed third place in the competition, all took part and crowds queued to sample their free giveaways.

A speed poppadom 'stack off' between restaurants saw **Cafe Rickshaw** win with a height of 44.5cms in one minute with **Red Fort** as runners up. Staff from **Bilash** used the occasion to practice stacking poppadoms ahead of an official attempt at the world record for the highest stack during **National Curry Week in October**. It was only the avid drumming of the **Azaad Dohl Group** that caused the tower to topple but we're sure Bilash owner **Mohammed Khan** will break the current world record of 1.57m next month.

Voting for '**Team Wolverhampton**' continues until **September 22nd** so help make the city **Curry Capital of 2011** by adding 'Wolverhampton' as the subject line in an email to: [vote@currycapitalwolves.co.uk](mailto:vote@currycapitalwolves.co.uk).

Full information is available from [www.currycapital.wolves.co.uk](http://www.currycapital.wolves.co.uk).



Kim Gilmour, Operations Director  
with Sam Hussain of Café Rickshaw

## Win Christmas! New City Centre Promotions



Retailers, venues, attractions and restaurants are getting together to promote one amazing prize worth thousands of pounds aimed at encouraging people into **Wolverhampton** this Christmas.

Promoted via advertising, posters and an up-market leaflet the idea is to generate footfall and promote all the good things in Wolverhampton. Already the city has entertainment galore lined up, a fantastic panto, shopping galore with big brands at **Beatties** and all the top high street stores like **M&S, Primark, Boots, Bhs and Peacocks**.

Now to add to all of this a competition to literally **win Christmas** from food to clothes, Christmas decorations, toys and entertainment, it will all be there in one package.

If your business wants to be part of this amazing promotion you need to get details to us as quickly as possible. In any event we will also be promoting Christmas offers, discounts and entertainment via our new web site [www.itschristmaswolves.co.uk](http://www.itschristmaswolves.co.uk). So contact Marianne on [wccc@wolverhamptonccc.co.uk](mailto:wccc@wolverhamptonccc.co.uk) or telephone 01902 551077 for more details.

## Christmas Opening Hours

<b>Wednesday 23rd November</b> .....	Open until 9.00pm <i>Christmas Lights Switch-On</i>
<b>Wednesdays 30th November, 7th, 14th &amp; 21st December</b> .....	Open until 9.00pm
<b>Saturdays 10th &amp; 17th December</b> .....	Open until 7.00pm
<b>Sundays</b> .....	Open 10.30am - 4.30pm
<b>Week commencing 12th December</b> .....	Open until 7.00pm ..... Wed Open until 9.00pm
<b>Week commencing 19th December</b> .....	Every night until 9.00pm
<b>Saturday 24th December</b> .....	Open 9.00am - 5.30pm <i>Christmas Eve</i>
<b>Sunday 25th December</b> .....	CLOSED <i>Christmas Day</i>
<b>Monday 26th December</b> .....	Open 9.00am - 5.30pm <i>Boxing Day</i>
<b>Tuesday 27th December</b> .....	Open 10.00am - 5.00pm <i>Bank Holiday</i>
<b>Wednesday 28th until Saturday 31st December</b> .....	Open 9.00am - 5.30pm
<b>Sunday 1st January 2012</b> .....	Open 10.30am - 4.30pm <i>New Year's Day</i>
<b>Monday 2nd January 2012</b> .....	Open 10.00am - 5.00pm <i>Bank Holiday</i>

NORMAL TRADING HOURS THEREAFTER  
(Individual stores opening hours may vary)

# Radio Link 'Vital' During City Centre Unrest



Smashed windows in a Dudley Street Store

Retailers, the Police, camera operators, transport providers, pubs and clubs were passing on valuable information before and during the riots in Wolverhampton through the city's **Radio Link** scheme.

**Wolverhampton City Centre Company (WCCC)** runs the **CitySafe Business Crime Partnership** which provides radios, intelligence and advice to 120 members for the prevention and detection of crime.

**Kim Gilmour, Operations Director**, said: "All day and right through the evening, the Radio Link was constantly being used to pass on information and intelligence and to stop the many rumours that were flying around. This provided some level of reassurance about what was and was not happening in the city centre."

She praised **camera operators** in both the **Police Station** and the **Council's Urban Traffic Control Centre** who were able to track the movement of youths and said she hoped recording of events on **CCTV cameras** would also help in the identification, arrest and prosecution of the individuals responsible for the damage and looting.

"The Radio Link is an important communication tool in both the day and night time economy and it is at times like these when the cooperation and the professionalism of members comes into its own. We would also like to praise the police for their handling of the events; their prompt and robust actions meant more than 90% of businesses were not damaged during the riots."

## Revitalising the City Centre

**Wolverhampton City Council** is working closely with businesses and other partners to create the right conditions in the city centre to stimulate enterprise and private sector investment.

As part of a wider strategy to revitalize the city centre, the Council has launched a package of measures to improve trading conditions in the area previously earmarked for the failed Summer Row project - now known as **Southside**.

While the Council can do little to improve the wider economic climate which is making trading so difficult at present, it is taking steps to improve the environment in **Southside** including buying vacant and run down premises and improving the car parking, security and appearance of the area starting with a programme of works on **Temple Street**.

Approved by the Council's Cabinet in the summer, the **Southside Intervention Project** also includes a range of practical advice and help for traders - all available from a **special advice 'shop' at 75 Worcester Street**.

So far over **20 local businesses** in Southside have been interviewed to establish their needs and to consider ideas to encourage more trade. The shop is open weekdays from 9.00am to 5.30pm but traders can book appointments outside these hours by calling **01902 555850**.

For more information visit:  
[www.wolverhampton.gov.uk/business/southside](http://www.wolverhampton.gov.uk/business/southside)

## City Safe Business Crime Partnership

### REMEMBER.

If you are a business signed up to the City Safe Business Crime Partnership that includes the City Centre Radio Link you should be completing Incident Forms in relation to:

**Shop Theft:** Persons involved in the theft, attempted theft or theft and dump of merchandise

**Deception:** Persons who attempt to obtain a refund on goods that have been stolen

**Credit Card Fraud:** Persons who attempt to, or pass fraudulent credit cards

**Street Crime:** Persons involved in pick pocketing, hand bag theft, street robbery, anti-social behaviour and disorder

**Sighting:** Persons who are involved in retail crime

The Target Books produced by the City Centre Company provide **YOU** as the **Business** information on Active Targets operating in the City Centre.

### All information will be shared with West Midlands Police.

Information sharing is important to multi-agency working and together we can successfully reduce crime & disorder

If you need Blank Incident Forms or assistance on filling out Incident Forms the **City Centre Wardens** will be happy to support and visit your business.

### Useful Contacts

#### Wolverhampton City Centre Company

Tel: 01902 551077

Email: [wccc@wolverhamptonccc.co.uk](mailto:wccc@wolverhamptonccc.co.uk)

#### City Centre Wardens

Tel: 07771 836 156 or 07771 836 153

Email: [CityCentreWardens@wolverhampton.gov.uk](mailto:CityCentreWardens@wolverhampton.gov.uk)

#### City Centre Neighbourhood Police Team

Tel: 0345 113 5000 Ext: 7871 6334

Email: [citycentre@west-midlands.pnn.police.uk](mailto:citycentre@west-midlands.pnn.police.uk)

## What's New!

**Azra** - Worcester Street shop selling gorgeous Asian materials and fashions

**Love Fashion** - specialist plus-size fashion clothing shop relocated to Mander Centre

**Re-loved** - new and gently worn children's clothes and toys shop in School Street

**Debra** - charity shop in aid of skin condition EB has opened in Market Square

**Craft World** - selling everything from wool to beads to cards in Victoria Arcade Mander Centre

**Rockys** - Broad Street's latest fast food outlet

**Framers** - gallery relocated from School Street to Worcester Street

**Darlington Vintage** - a welcome to the city for this vintage clothing shop in Darlington Street

**Gold and Black Cafe** - from breakfast to baguettes to buffets, get them all at this new Lichfield Street cafe.

## P3 'Big Sleep Out' Wolverhampton 21st to 22nd October 10.00pm to 6.00am

A sponsored 'rough sleep' will take place in the City Centre Civic Piazza, with proceeds assisting a re-cycling furniture project which will be managed by P3 Charity clients. Collection buckets for donations will be situated in Lloyds TSB Bank, Argos and Carillion Offices; Wilkinson's will be providing toiletry packs for P3 Charity. If any food outlet would like to be involved by providing breakfast for the 70 people who will be sleeping out please contact Lucy Bickley on 01902 551077.



To donate visit: [www.justgiving.com/p3bigsleepout](http://www.justgiving.com/p3bigsleepout)  
or for more details visit: [www.p3charity.com](http://www.p3charity.com)

## Flip Animation Festival 27th to 29th October - Light House Media Centre

Now in its 8th year, Flip Festival is a diverse blend of all thing animation. It provides the opportunity for young people and adults alike to experience educational workshops, experimental animation, see film screenings and much more. For further information visit: [www.flipfestival.co.uk](http://www.flipfestival.co.uk)

## What's Going On

### Heritage Open Days 8th to 11th September

Building on the growing success of previous years, this year's Heritage Open Days programme will include behind the scenes tours, exhibitions and events at many places across the city including Banks's Brewery, The Art Gallery, Molineux Stadium, Beatties Heritage Room, Grand Theatre and many more.

New for this year include guided tours of Tettenhall College, St John's Church in the Square, The Mayor's Parlour, Thomas Cook: A History of Holidays and The Twentyman Trail. More information online at: [www.wolverhampton.gov.uk/visit](http://www.wolverhampton.gov.uk/visit)



### Light House Media Centre 25th Anniversary

Light House is 25 this year so take a look behind the scenes as part of Heritage Open Days on 10th and 11th September and see how the cinema works, from original 35mm projectors to new state of the art digital technology. For more info visit: [www.light-house.co.uk](http://www.light-house.co.uk)

### What's On Where

The new issue covering council supported live music, film, theatre, art, workshops, family/outdoor events and sports events from October to December, and detailing all the Christmas festivities will be available from 1st October from WCC Tourism Dept on 01902 552055 or see: [www.wolverhampton.gov.uk/whatson](http://www.wolverhampton.gov.uk/whatson)

### Just a few of the Highlights

**My Life** - Art Gallery, 9th September to 10th October

**Rhinestone Mondays** - Grand Theatre, 13th to 17th September

**One Man, Two Guvnors** - Light House Media Centre, 15th September

**The Tempest** - Arena Theatre, 19th September

**Music on Screen: Faust** - Light House Media Centre, 28th September

**Black & Ethnic Minority Experience** - Art Gallery, 1st to 30 October

**The Specials** - Civic Hall, 11th & 12th October

**Much Ado About Wenlock** - Arena Theatre, 18th & 19th October

**Calendar Girls** - Grand Theatre, 24th to 29th October

**Sarah Millican: Thoroughly Modern Millican**  
Civic Hall, 1st November

For full details see: [www.wolverhampton.gov.uk/whatson](http://www.wolverhampton.gov.uk/whatson)



Kim



Lucy



Marianne

## For further information contact:

Kim Gilmour, Lucy Bickley or Marianne Carter

Wolverhampton City Centre Company Tel: **01902 551077**

Email: [wccc@wolverhamptonccc.co.uk](mailto:wccc@wolverhamptonccc.co.uk) or visit: [www.wolverhamptonccc.co.uk](http://www.wolverhamptonccc.co.uk)

**Wolverhampton City Centre Company** is an independent, proactive organisation working strategically and operationally with partners to identify and address key issues to improve the marketing, environment, safety and economy of the City Centre. Through a Board and our Stakeholder Groups, WCCC works with a large number of private businesses representing the 'Voice of the City Centre'.

WCCC is funded by the public and private sector including Wolverhampton City Council, the Mander and Wulfrun Centres, Hortons' Estate, National Express, Sainsburys, Boots and the University of Wolverhampton.